

# Brain health : the new frontier in dietary supplements

EXCLUSIVELY FROM IMMUNOTEC

**NEW!**

# COGNIVA™

with **SYNA-PS<sub>50</sub>**™







*Now, you can  
chew your way to  
brain health!*

## Helps improve cognitive performance\*

*Environmental toxins, information overload, stress, and the aging process may all impact our brains, affecting memory, alertness, focus, and overall cognitive performance. This is why you need COGNIVA, an innovative nootropic “smart chew” exclusively from Immunotec with SYNA-PS<sub>50</sub>, our proprietary blend of scientifically researched ingredients containing phosphatidylserine (PS).*

## Benefits

-  Helps improve overall cognitive performance\*
-  Helps improve alertness and concentration\*
-  Provides a quick boost of focus and mental sharpness\*
-  Helps support long-term brain health and short-term memory\*

### Connections count!

Our brain contains billions of neurons which communicate with each other through trillions of connections called **synapses**.



Healthy connections ensure your best cognitive performance.

\* These statements have not been evaluated by the FDA.  
This product is not intended to diagnose, treat, cure, or prevent any disease.

# Clarity. Concentration. Confidence. Cogniva.

# SYNA-PS<sup>50</sup>™ is Immunotec's unique and proprietary blend of scientifically researched ingredients, formulated with:

- 🧠 **Phosphatidylserine (PS)** has been studied extensively for its role in memory and cognition
- 🧠 **Chromium** increases brain glucose transporters, providing neural energy
- 🧠 **Vanadium** is an essential micronutrient for normal neurochemical metabolism
- 🧠 **Choline** is a critical component of brain cell membranes and neurotransmitters
- 🧠 **Boron** is a trace element involved in neuronal energy utilization

## Other key ingredients include:

**Methyl Folate** is the active form of natural folate involved in the production of neurotransmitters

**Methylcobalamin** (vitamin B12) is a highly active form of B12 which supports healthy epigenetic regulation

**Green Tea Isolate** provides natural caffeine that is micro-encapsulated for a gentler and longer effect than synthetic caffeine

**Cogniva is vegan,  
gluten-free,  
and contains  
no artificial  
sweeteners or  
preservatives.**



## Who needs Cogniva?

- 🧠 Students, for improved focus and learning
- 🧠 Adults, to help cope with a hectic lifestyle
- 🧠 The elderly, for memory support

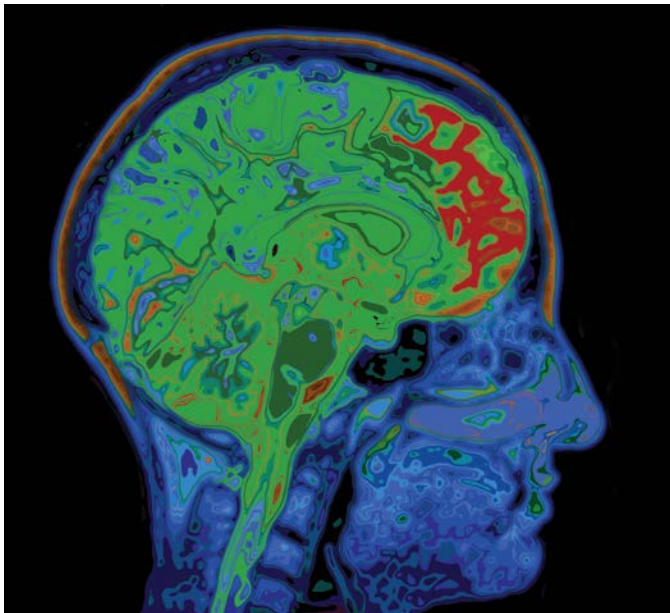
These statements have not been evaluated by the FDA.

This product is not intended to diagnose, treat, cure, or prevent any disease.

*"In recent years, so much attention has been paid toward preserving and salvaging brain function in all age groups. This is why 'nootropics' (also called cognitive enhancers) were developed, and are rapidly becoming mainstream."*

**Dr. Jimmy Gutman, Senior Medical Advisor**

Your Independent Immunotec Consultant is



**In this MRI, red indicates the brain area responsible for cognition**

Each delicious, natural fruit-flavored Cogniva chew is individually wrapped for convenient, once-a-day consumption. There are 30 smart chews, one for each day of the month, in a resealable foil bag to ensure long-term freshness.